

*Morgane Roux Lafargue*

**PORTFOLIO**

**2024**

# About

*Morgane Roux Lafargue is a French architect and designer who designs concept-driven spaces, furniture, and lighting. Her work is the result of deep research in iconic and symbolic references that combines the different areas of design and art through a multidisciplinary approach.*

*Her color palette is defined by a mix of deep and natural tones, with patterns and textures coming from noble materials. Bold statement pieces carefully selected, bring strong personality and permanence to her compositions. Her designs have a narrative-driven aesthetic.*

*Morgane's designs and installations have been showcased across the globe at leading design fairs including Salone del Mobile in Milan and London Design Festival and featured extensively in publications such as Wallpaper\*, Designboom, Sight Unseen, Elle Decoration, Architectural Digest and more.*

**I.INTERIOR DESIGN . II.LIGHTING . III.FURNITURE . IV.EXPERIMENTAL**

**PART I**

*Interior Design*

*Morgane Roux Lafargue*



Concept Reference



End of the lane



Central Lane

## RETAIL

### *Dubai Festival City - The Link*

via MALHERBE PARIS

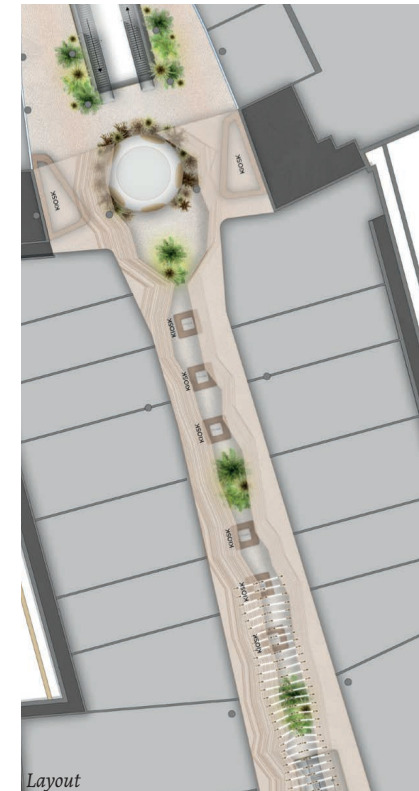
This project lays down the interior design concept for this very long and narrow space within a very large mall called “the link” within while still being entertaining for the users. To convey this idea of linear and continuous progression, the ceiling configuration mimicks the shape of a canyon, with a look&feel has been kept as airy and bright as possible. An ever-moving kinetic sculpture fills the height and brings an artistic element of surprise to the space.



Kiosk



Al-Futtaim



Layout





Conceptual Reference



Restaurant Space



Central Space

# RETAIL

## Dubai Festival City - Zone 4

via MALHERBE PARIS

This area of the mall is located at the end of “the Link” area (previous slide). In order to keep the central space uncluttered and inviting, the numerous mezzanine levels are treated with translucent or transparent surfaces, such as clear glass and metallic mesh. The color palette is deliberately soft and bright to enhance the natural light of the space and give a more modern feeling to it. Minimalist ceiling sculptures and natural vegetation are brought into the project to bring visual serenity to the project.



Al-Futtaim



Kiosk



Lift Cabin



Layout





# HOSPITALITY

*Cafe Phoxi, Lebanon*

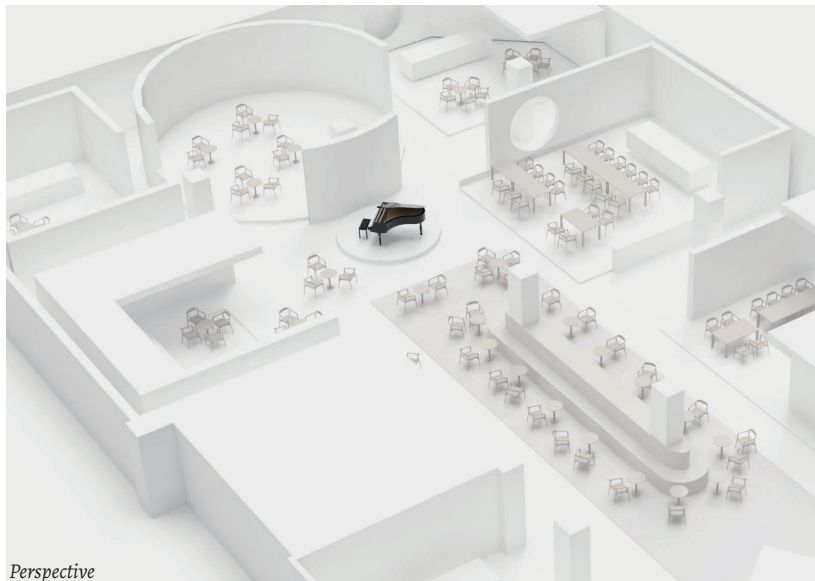
This project is very much based on the wabi-sabi concept where the small and unified space is treated with natural tones and soft textures. The main hot spot is this minimalist yet impactful pastries counter around which small and round shaped tables are freely placed. Delicate details, and raw materials are coming together to form this interior based on coziness and modesty.







Conceptual Reference



Perspective



Entrance View

# HOSPITALITY

## Food Court- SKP Beijing

via MALHERBE PARIS

Developed from the unexpected concept of a grand hotel, this foodcourt articulates the different restaurant spaces around an open and central space treated as a lobby. Each “room” around, is specifically designed for a chinese region and its corresponding cuisine. Architecturally we have a ‘spaces-within-a-space’ type of layout, where each subspace has its own material palette and design principles.



LAKE



HU NAN

TEA



FU JIAN

SILK ROOM



JIANG SU



Interior Reference





# RESIDENTIAL

## *Saudi Arabia*

via ANARCHITECT

**CONFIDENTIAL PROJECT**

*-ask for more info*



FF&E Board





# RETAIL

*Christian Louboutin - World wide*

**CONFIDENTIAL PROJECT**

*-ask for more info*







# HOSPITALITY

## *SPA - Undisclosed location*

This project envisions a very luxurious and spacious Spa Room showcasing the new collection of a sanitary fittings brand. (*Iconico*). The design of this space is based on the architectural porosity between the outdoor and the indoor, allowing nature to really take part of the composition.

These high resolutions imagery is used by the brand across their communication channels for marketing purpose.



*Close up Switch*



*Close up Towel Rail*



Living Room

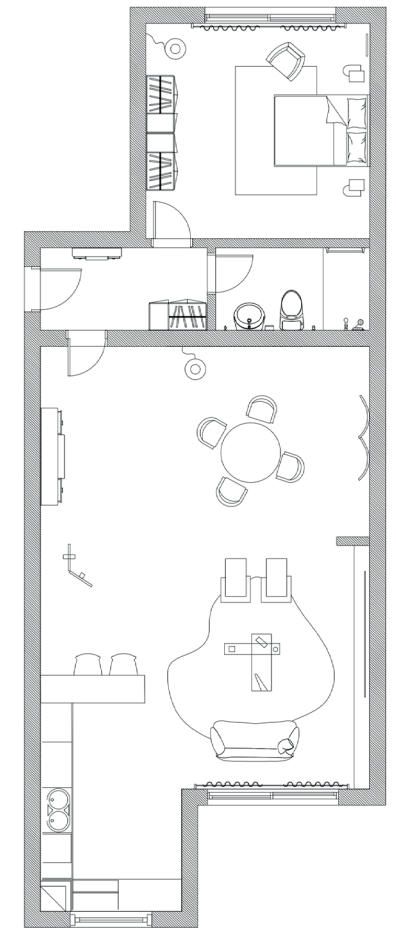


Dining Area

# RESIDENTIAL

## Private apartment, Portugal

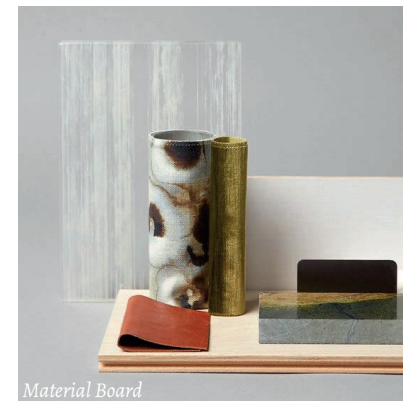
This interior showcases a mindful curation of modern collectible pieces as well as vintage ones. Powdery palette and noble materials are keys that define this project. Most furniture pieces are bespoke ones, made with local artisans and makers with locally sourced materials.



Layout



Bedroom



Material Board



Bespoke Armchair

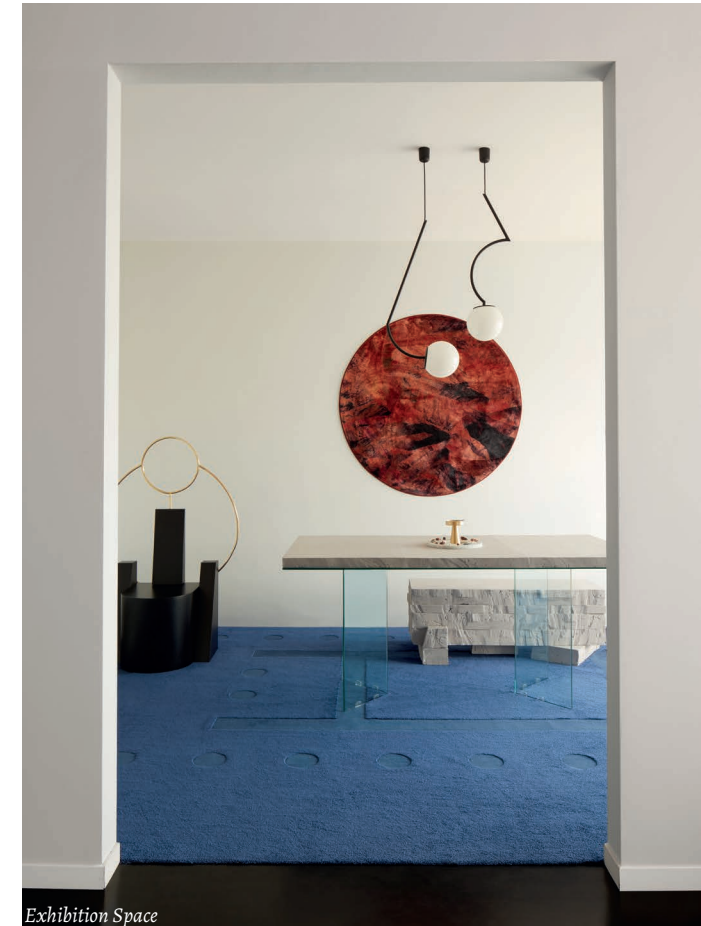




Conceptual Image



Bespoke Bench

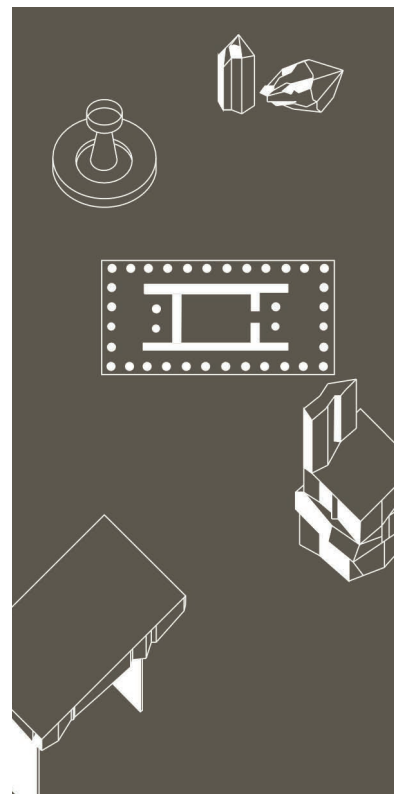


Exhibition Space

## Site Specific INSTALLATION

*Milan Design Week*

'The Symbolic Room' is a meeting room for a meeting between you and yourself. The Installation is a representation of an inner space filled by archetypal images and symbolic objects. It is a sanctuary for introspection. This installation was commissioned by Strategic Footprint for Milan Design Week.



Close up Accessories

**PART II**  
*Lighting*

*Morgane Roux Lafargue*



# PENDULUM

## *Wall Lamp*

The Pendulum Wall Lamp is a sophisticated wall fixture with a double ended structure.

Concepts such as balance and gravity inspired the design and gave the name to this piece.

**dia 20 cm x 20cm x 130(h) cm**

### **Materials:**

Powder Coated Metal

Glass Globe





## **OMEN** *Chandelier*

The Omen Light collection is a sculptural yet graphic collection using a distinctive chalice-like metallic shade as the main element. The Omen lights are statement pieces that will add personality to any environment.

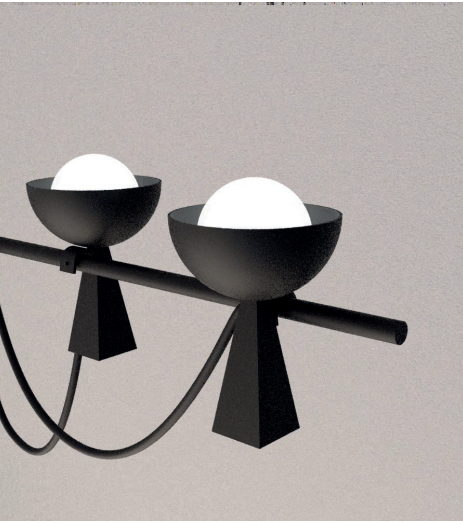
Each lighting element is suspended and balanced around the central ring. The electric cords hang mindfully and elegantly towards each pendant, building altogether a distinctive look.

**32 cm x 12cm x 132cm (h)**

 *Bespoke dimensions and formats possible*

### **Materials:**

Powder Coated Metal  
Glass Globe



# OMEN

## *Diner*

The Omen Light collection is a sculptural yet graphic collection using a distinctive chalice-like metallic shade as the main element. The Omen lights are statement pieces that will add personality to any environment.

Each lighting element is suspended and balanced around the horizontal rod. The electric cords hang mindfully and elegantly towards each pendant, building altogether a distinctive look.

**32 cm x 12cm x 132cm (h)**

 *Bespoke dimensions and formats possible*

### **Materials:**

Powder Coated Metal

Glass Globe





# OMEN

## *Single Pendant*

The Omen Light collection is a sculptural yet graphic collection using a distinctive chalice-like metallic shade as the main element.

The Omen single pendant is a statement pendant that will add personality to any environment. The shade is suspended and balanced at the end of an semi-circle metallic arm.

Height can be adjusted according to needs.

**32 cm x 12cm x 132cm (h)**

### **Materials:**

Powder Coated Metal

Glass Globe

**PART III**

*Furniture*



# MONUMENT

## *Table Set*

MONUMENT is a set of 3 side tables using iconic shapes and architectural references.

Combining different scales and proportions, the piece blurrifies the boundaries between architecture, furniture, and accessory, forming altogether an impactful artefact.

**Big Volume - Cube of 45cm**

**Medium Volume - Cube of 30cm**

**Small Volume - Cube of 15cm**

### **Materials:**

Alicante Red Marble

Green Verde Guatemala

& other stones upon request





# PASSAGE

## *Coffee Table*

Passage table is a very elegant square coffee table that offers a wide horizontale surface to use.

Balancing together two different materials, the L shape travertine rests on two gently curved wooden volumes.

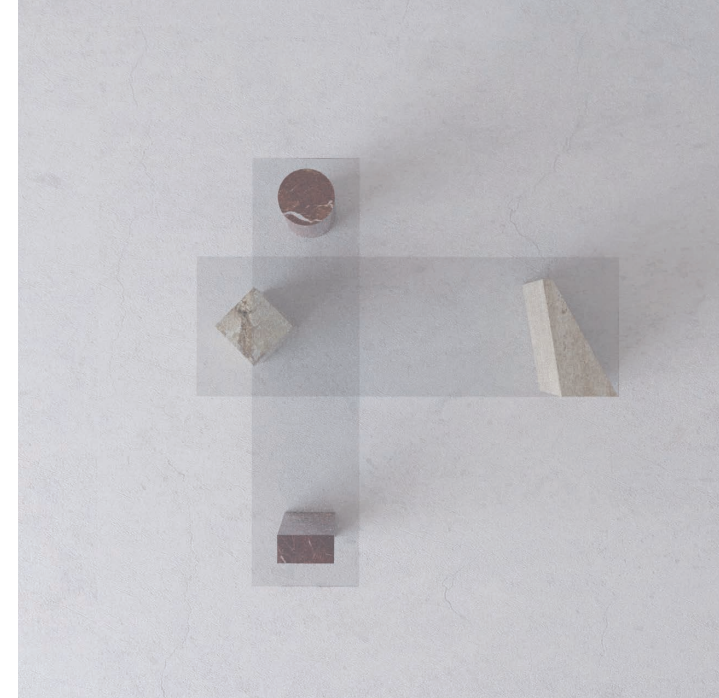
This piece is a delicate mix of straight lines and soft curves with a special attention to the chamfered edges.

**100 cm x 100cm x 35cm (h)**

### **Materials:**

Travertine

Oak



# POST-M

## *Coffee Table*

Post M Table low table is a combination of two console-like elements that are combined one above the other. It offers a variety of configurations and positions.

Post M table is definitely a very sculptural piece focused on the beauty and geometry of each stone used together to build this aesthetic composition.

**120 cm x 25 cm x 45 cm (h)**

**120 cm x 37 cm x 35 cm (h)**

 *Bespoke dimensions and formats possible*

### **Materials:**

Clear Glass

Various Stones available



# ANCHOR

## *Chair*

Anchor chair has a very graphic allure combining sleek lines and strong angles.

It works well on its own as an accent chair and can also easily be multiplied around a table due to its pure geometry and clean look, especially when viewed from the back.

**95 cm (h) x 55 cm x 45cm**

**Materials:**  
Stained Oak

**PART IV**

*Experimental*

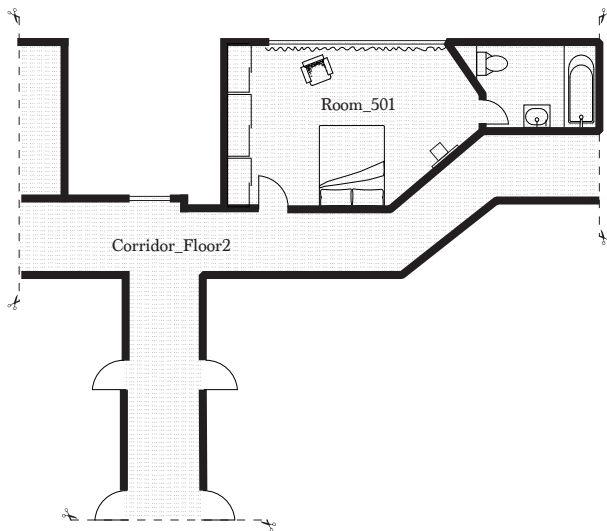


# HITCHCOCK-INSPIRED Hotel

Inspired by the very peculiar atmosphere of Hitchcock's movies, this experimental interior design project showcases 3 furniture pieces developed from this imagery.

Hitchcock often represented the physical world as a projection of a disturbed person shown through striking set design and lighting effects. That type of "expressive decor" has been particularly interesting to work on and adapt for this project.

Following this approach and cultivating the dramatic potential of the domestic sphere, the pieces of furniture have been staged in a series of visuals, almost conceived as a short storyboard.





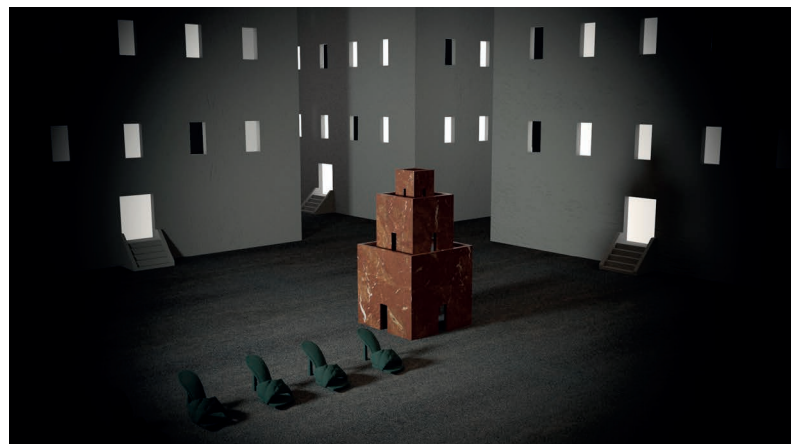
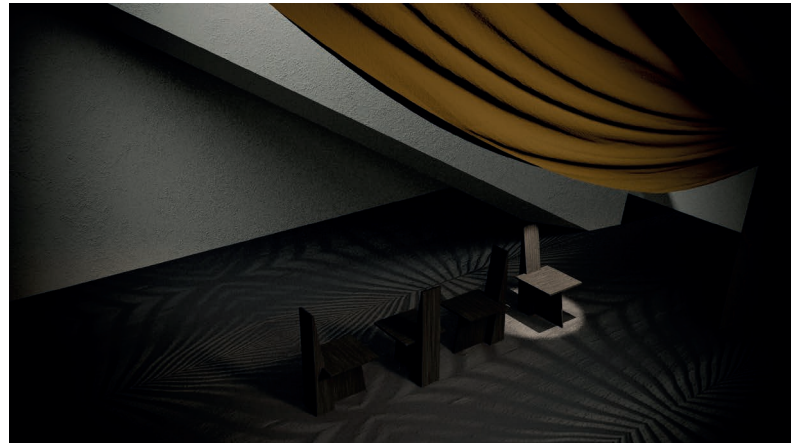
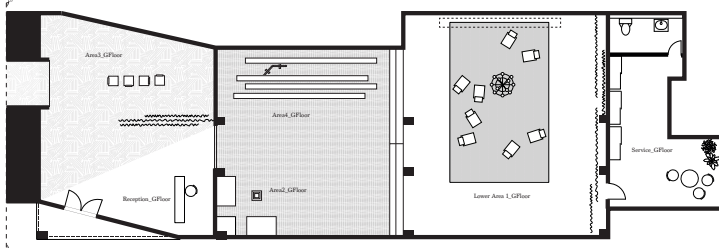
# FILM NOIR-INSPIRED

## Boutique

Diving into the very rich aesthetic of the German Expressionism cinema that emerged in the 1920's, the project uses its aesthetic codes and mise-en-scene techniques to create a decor-like environment for the store.

When Expressionism cinema and Film Noir first developed in Germany and later in the United States, the movement drastically created new ways to make movies, using new narrating plots and decor, unlike anything that had come before in film. simply put, Expressionism is a language of subjectivity projected outward.

The project explores a way to translate architecturally and visually an environment that seems off balanced, crooked and unreal, as if the decor was a physical expression of an overwhelming anxiety feeling.





# EDWARD HOPPER INSPIRED

## Imagery & Furniture

Looking through the work of Edward Hopper, Jim Jarmush, or even John Register, an immersive conceptual and visual study has led to design a collection of furniture and visuals based on the wait.

This collection focuses on this philosophical theme of the wait as an introspective condition that has its own aesthetic and visual codes.

People who are waiting “are not opponents of home per se; it is simply that in a variety of undefined ways, home appears to have betrayed them, forcing them out, into the night and onto the road.

With this collection, feelings triggered by the wait, such as contemplation, distortion of time and passivity, are translated into these 3 pieces of furniture. The whole set together displays an uncanny scene offering a kind of alienated poetry.

*Furniture and artistic direction by Morgane Roux Lafargue*  
*Visuals rendered by 6n5.*



Wall Lamp



Waiting Chairs

Edward Hopper

# Contact

## Phone

+33 6 56 68 66 34

## E-Mail

*morgane@atelieraveus.com*

## Website

*www.atelieraveus.com*

## Instagram

*@atelieraveus*